

# WHITEHORSE APARTMENTS



APPLY TODAY!

Whitehorse Apartments, located along Route 66, offers a charming and convenient residential experience. Just ½ mile from the Kilpatrick Turnpike, it's a quick drive to Southern Nazarene University and downtown Oklahoma City. Situated in the reputable Yukon School District, it's an ideal community for families and professionals seeking a peaceful home. With landscaped grounds and a welcoming atmosphere, it's a perfect place to relax. Contact us to learn more about making Whitehorse Apartments your next home!



"Relax, You're Home Now"

## "Home Is Where Your Story Begins"

10801 West Highway 66

Yukon, OK 73099

**(405) 554-4935**

Email: [whitehorse@npmainfo.com](mailto:whitehorse@npmainfo.com)

## AMENITIES

- 24 Hour Emergency Maintenance
- All Electric
- Cable Ready- Cox Quick Connect
- Convenient Location
- Courtesy Officer
- Fireplace (Wood-Burning)\*
- Mini Blinds
- 2" Blinds
- Monthly Resident Functions
- Online Resident Portal
- Patio/Balcony
- Pantry In Kitchen
- Pavilion with Picnic Tables
- Stainless Steel Appliances\*
- Sparkling Pool
- Text Friendly
- Walk-In Closets
- Washer/Dryer in Every Unit
- Luxury Vinyl Flooring
- Yukon Schools

*\*In Select Units*

# FLOOR PLANS

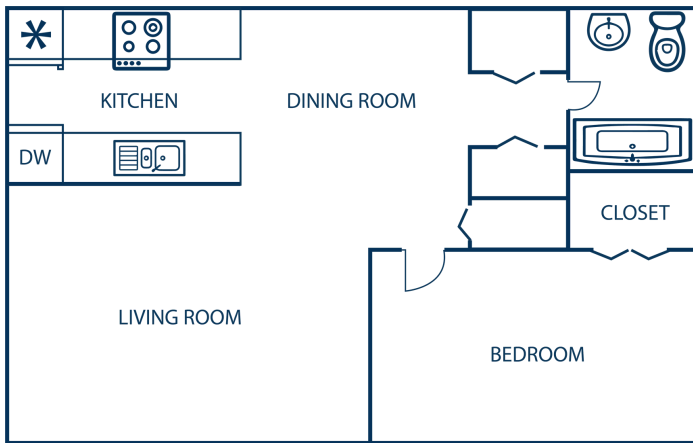
Deposit: \_\_\_\_\_

Application/Admin Fee: \_\_\_\_\_

Pet Fee/Rent: \_\_\_\_\_

## One Bedroom/One Bath (530 Square Feet)

Rent/Utilities: \_\_\_\_\_



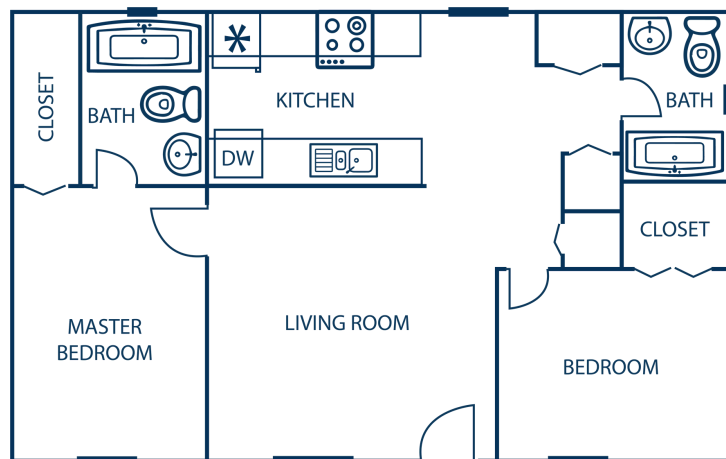
## One Bedroom/One Bath (620 Square Feet)

Rent/Utilities: \_\_\_\_\_



## Two Bedroom/Two Bath (770 Square Feet)

Rent/Utilities: \_\_\_\_\_



## Two Bedroom/Two Bath (820 Square Feet)

Rent/Utilities: \_\_\_\_\_

