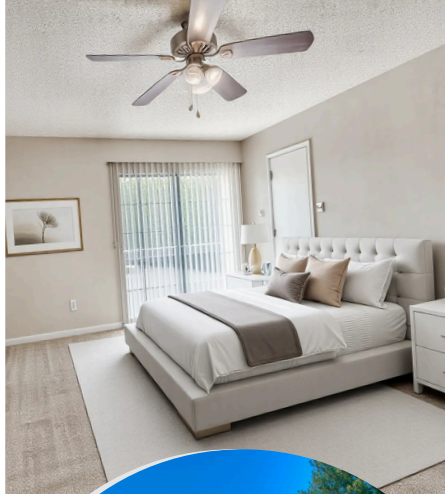


# WESTSIDE CREEK APARTMENTS



APPLY TODAY!

## "Comfortable And Sophisticated Apartments"

4710 Sam Peck Road, Little Rock, AR 72223

**(501) 462-4501**

Email: [westsidecreek@npmainfo.com](mailto:westsidecreek@npmainfo.com)

### AMENITIES

24 Hour Emergency Maintenance Service

24 Hour Fitness Center

Sparkling Pool With Sun Deck

Beautiful Wooded Setting

Mature Landscaping

On-Site Recycling

Pest Control Services

Planned Resident Events

Wooded Views

Outside Storage

Patio/Balcony In Select Units

With spacious one and two-bedroom apartment homes and townhomes, Westside Creek boasts a blend of modern comfort and classic sophistication, convenient to the best of West Little Rock. We offer the ability to soak up the beauty of 28 lush acres of award-winning landscapes, work up a sweat in the athletic facility, and then relax in one of two sparkling swimming pools – luxurious amenities all from the comfort of your new home with us.

At Westside Creek, you are minutes from so many spots in West Little Rock, Arkansas! Pleasant Ridge Town Centre is just around the corner, and the shopping, dining, and entertainment you need is all within easy reach.



"Relax, You're Home Now"

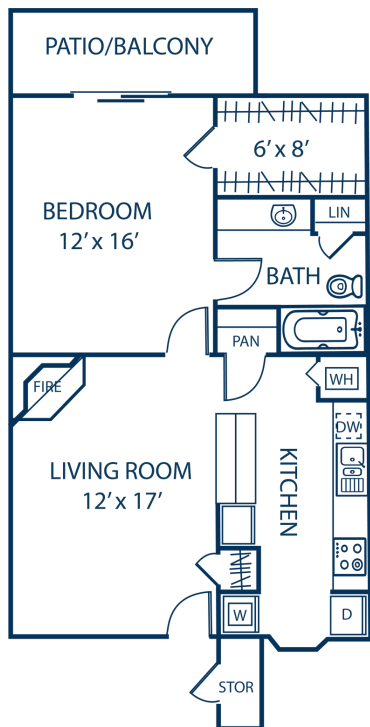
# FLOOR PLANS

Deposit: \_\_\_\_\_

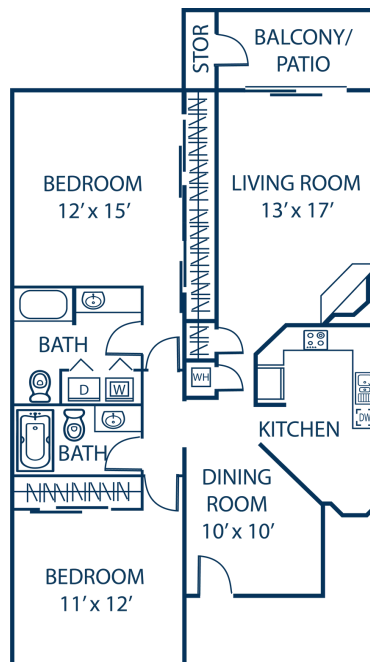
Application/Admin Fee: \_\_\_\_\_

Pet Fee/Rent: \_\_\_\_\_

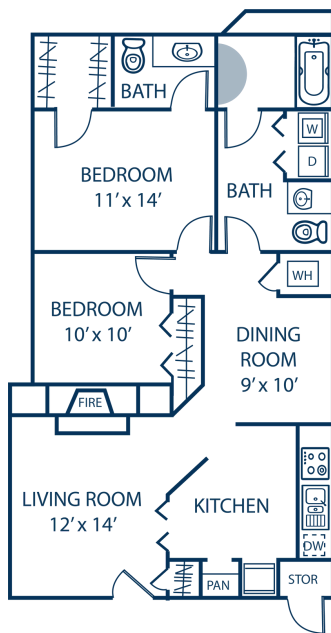
**1 Bed/ 1 Bath (734 Square Feet)**



**2 Bed/ 2 Bath (1172 Square Feet)**



**2 Bed/ 1.5 Bath (1000 Square Feet)**

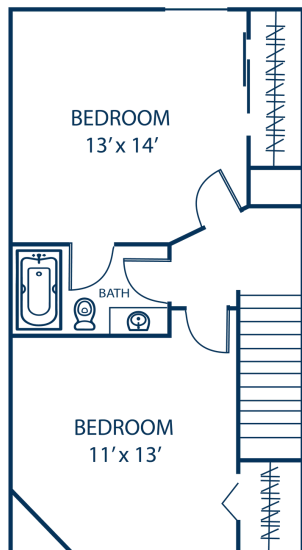
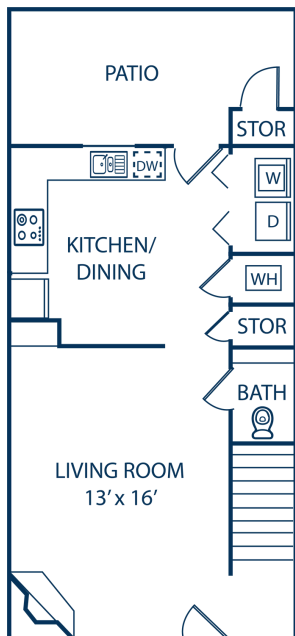


Rent/Utilities: \_\_\_\_\_

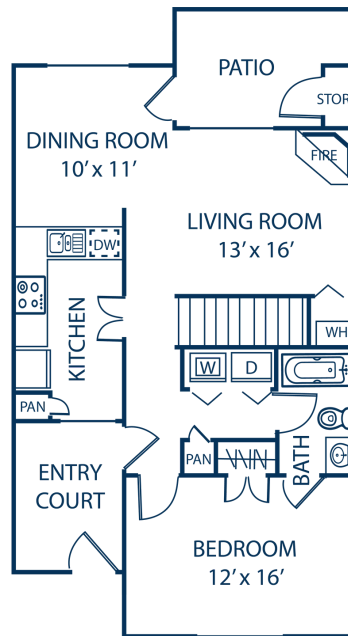
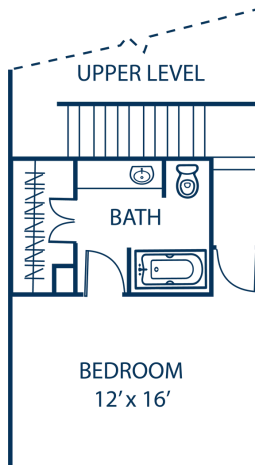
Rent/Utilities: \_\_\_\_\_

Rent/Utilities: \_\_\_\_\_

**2 Bed/1.5 Bath Townhome (981 Square Feet)**



**2 Bed/ 2 Bath Townhome (1189 Square Feet)**



Rent/Utilities: \_\_\_\_\_

Rent/Utilities: \_\_\_\_\_