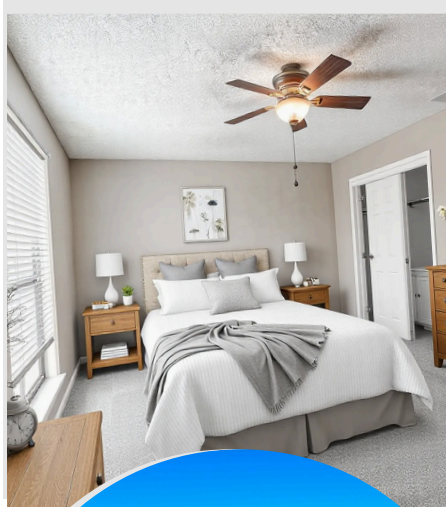


# THE VILLAGE ON BROADWAY



APPLY TODAY!

This adorable townhome community is located right off South Broadway, between Rice and Rieck Rd. Its prime location combined with its beautiful construction makes it the perfect place to call home. Built in the 1960s with several updates, it has the perfect combination of vintage charm and modern style. Most of our townhomes have their own private backyard, so bring your pups! Bring your walking shoes also, because our little community is within walking distance of just about anything you can think of!



"Relax, You're Home Now"

## "Landmark Living On The Avenue"

5315 South Broadway Avenue  
Tyler, TX 75703

**(903) 522-5142**

Email: [villageonbroadway@npmainfo.com](mailto:villageonbroadway@npmainfo.com)

## AMENITIES

24 Hour Maintenance Services  
Cable Ready  
Ceiling Fans  
Coin Operated Laundry  
Dead Bolt Locks  
Exterior Lighting  
Garbage Disposal  
High Speed Internet  
Picnic Recreation Area  
Mini Blinds  
Private Patio/Balcony  
Walk-In Closets  
Washer & Dryer  
Well Kept Grounds

# FLOOR PLANS

Deposit: \_\_\_\_\_

Application/Admin Fee: \_\_\_\_\_

Pet Fee/Rent: \_\_\_\_\_

**One Bedroom/One Bath (600 Square Feet)**

Rent/Utilities: \_\_\_\_\_



**Two Bedroom/One Bath (1200 Square Feet)**

Rent/Utilities: \_\_\_\_\_



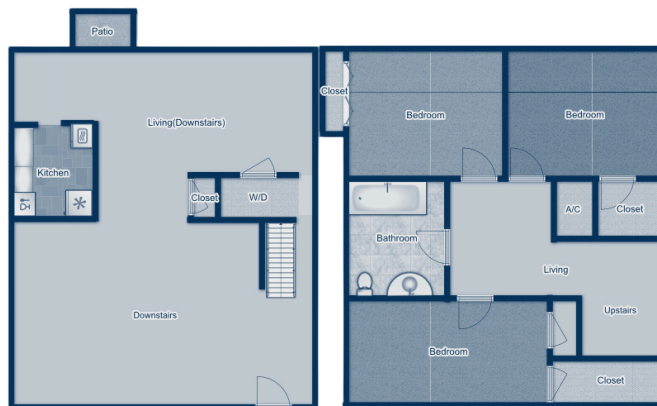
**Two Bedroom/One and One Half Bath (1200 Square Feet)**

Rent/Utilities: \_\_\_\_\_



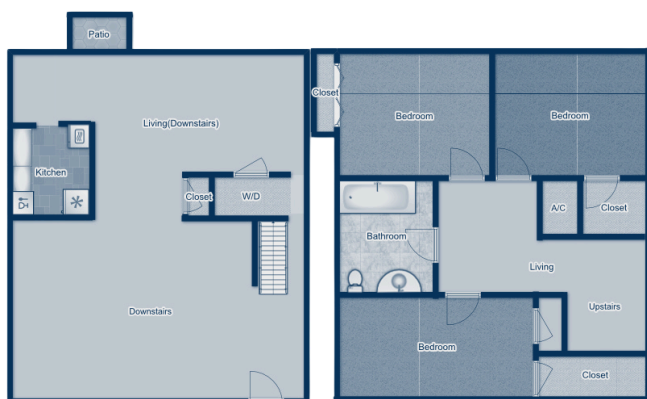
**Three Bedroom/One Bath (1200 Square Feet)**

Rent/Utilities: \_\_\_\_\_



**Three Bedroom/ One and One Half Bath (1200 Square Feet)**

Rent/Utilities: \_\_\_\_\_



**Three Bedroom/ Two Bath (1500 Square Feet)**

Rent/Utilities: \_\_\_\_\_

