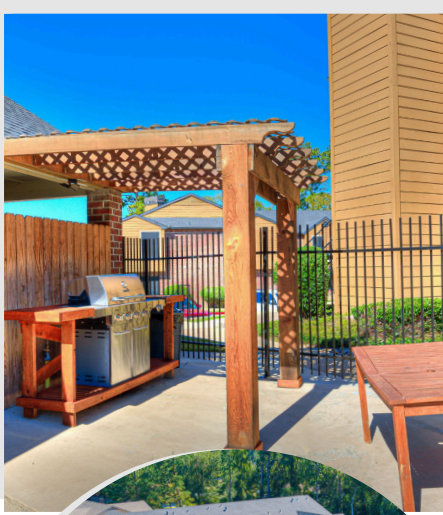


THE COLONY



APPLY TODAY!

"Live At Lufkin's Premier Address!"

300 Champions Drive

Lufkin, TX 75901

(936) 758-7666

Email: colony.apartments@npmainfo.com

AMENITIES

Air Conditioning

Cable Ready

Ceiling Fans

Dishwashers

Garbage Disposal

Fireplace

Garden Windows

High Ceilings

Microwave

On-Site Management & Maintenance

Outside Storage

Patio/Balcony

Sparkling Pool

Public Transportation

Short Term Leases Available

Tiled Kitchen & Bathroom

Washer/Dryer

Wheelchair Access

Located In Crown Colony Subdivision

Experience the best of Lufkin living at The Colony Apartments! Nestled in the prestigious Crown Colony subdivision, our affordable luxury apartment homes are just minutes away from Angelina College, Lufkin Mall, Highway 59, and LISD schools.

Choose from our one and two-bedroom floor plans, each featuring a washer and dryer for your convenience. This pet-friendly community is ideal for anyone seeking a serene and accessible place to call home. Enjoy a modern lifestyle within a tranquil and welcoming atmosphere designed for individuals with refined tastes. Make The Colony Apartments, with its country-club-like vibe, your new home today!



"Relax, You're Home Now"



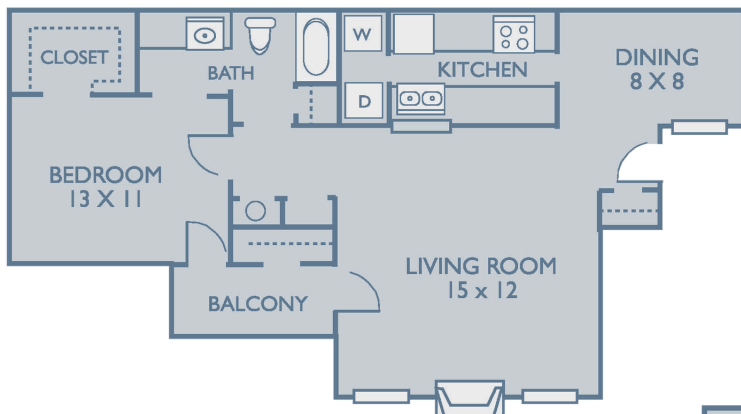
Deposit: _____

Application/Admin Fee: _____

Pet Fee/Rent: _____

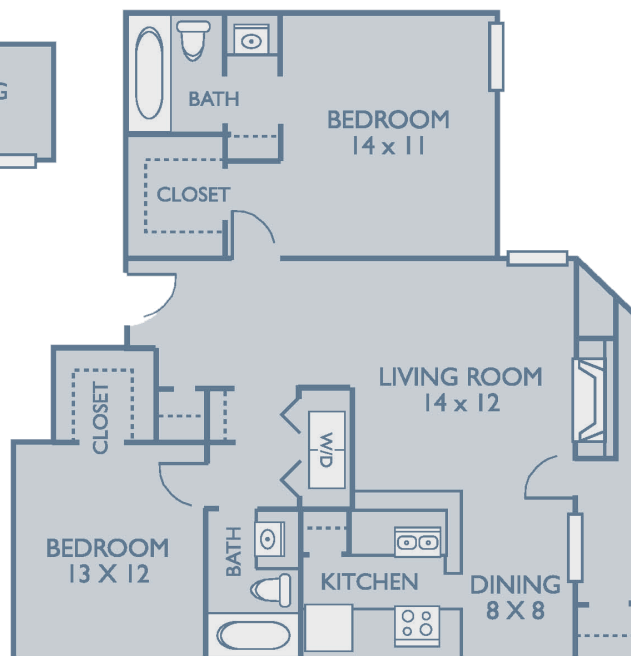
One Bedroom/ One Bath (719 Square Feet)

Rent/Utilities: _____



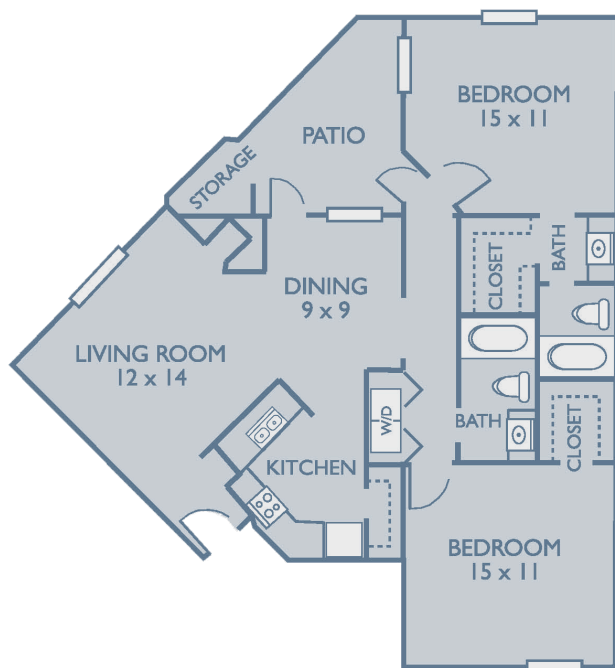
Two Bedroom/Two Bath (1000 Square Feet)

Rent/Utilities: _____



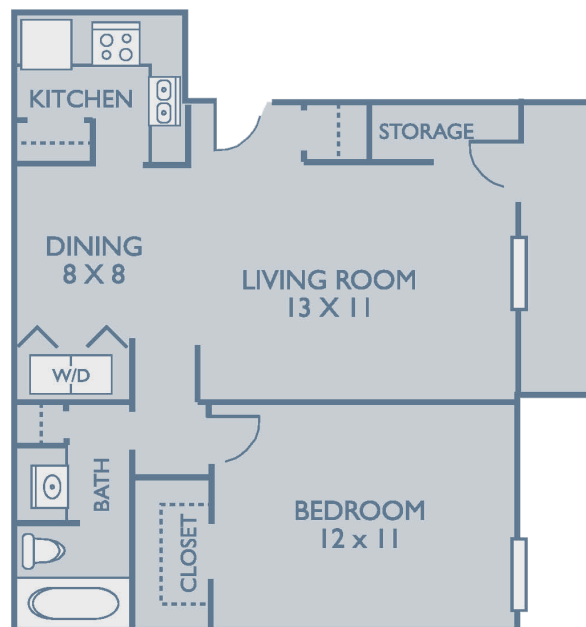
Two Bedroom/ Two Bath (1055 Square Feet)

Rent/Utilities: _____



Three Bedroom/ One Bath (1284 Square Feet)

Rent/Utilities: _____



FLOOR PLANS