



APPLY TODAY!

Experience comfort in spacious 1 and 2-bedroom apartments with all-inclusive living, including utilities and no activation fees. Silver Elm offers three ADA-compliant units with safety features, convenient entrances, light housekeeping, and in-unit washers and dryers. Enjoy resort-style amenities like three daily meals from Joey's Café, an on-site beauty salon, and a vibrant social calendar, along with local transportation for outings. Join the lively community at Silver Elm Estates—schedule your visit today!

"A Life Well Earned"

2100 36th Ave NW

Norman, OK 73072

(405) 554-5901

Email: silverelmnorman@npmainfo.com

AMENITIES

Spacious Units

Washer/Dryer In Every Unit

Emergency Pull Cords in Every Unit

Available Carports for Separate Rental

All Utilities Included (No Activation Fees)

Local Transportation for Healthcare Visits

and Scheduled Outings

Daily and Weekly Activities

Regularly Scheduled

Light Housekeeping

Online Resident Portal

Small Pets Welcome

On-Site Beauty Salon

3 Fresh Cooked Meals

Daily From Joey's Cafe



"Relax, You're Home Now"

FLOOR PLANS

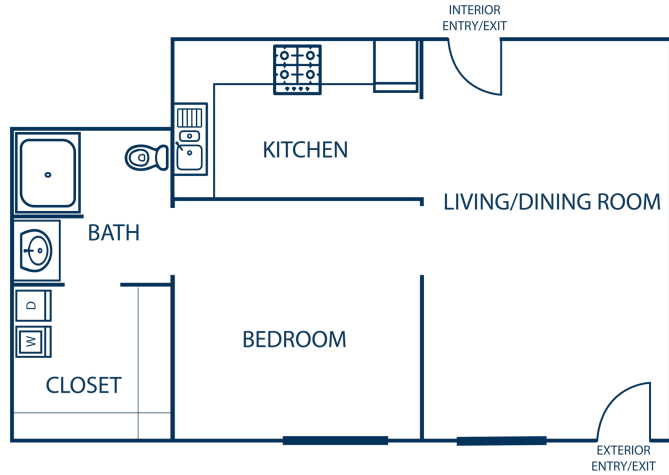
Deposit: _____

Application/Admin Fee: _____

Pet Fee/Rent: _____

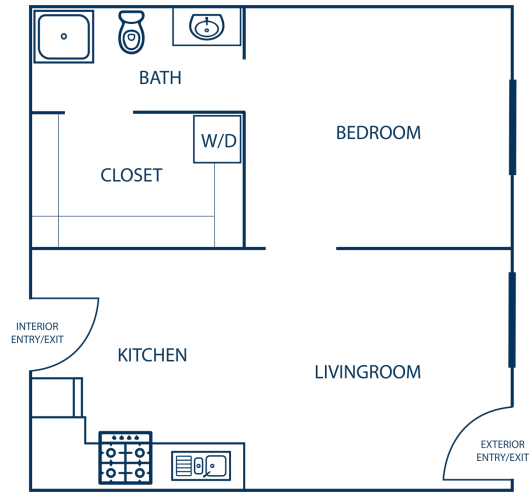
One Bedroom/One Bath (790 Square Feet)

Rent/Utilities: _____



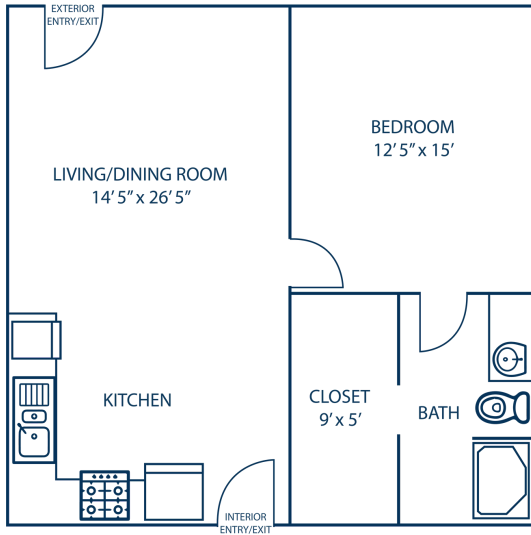
One Bedroom/One Bath (650 Square Feet)

Rent/Utilities: _____



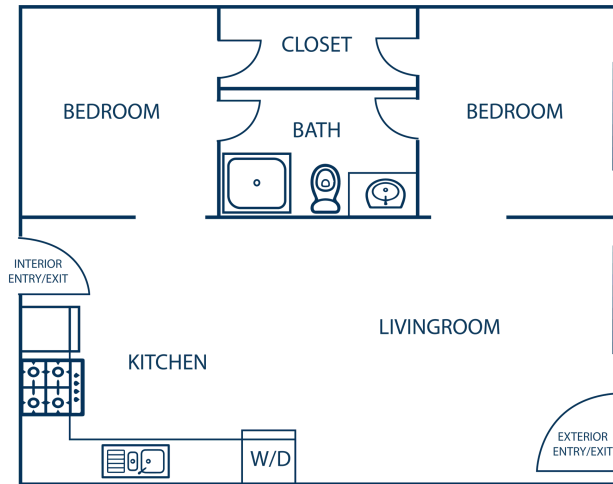
One Bedroom/One Bath (725 Square Feet)

Rent/Utilities: _____



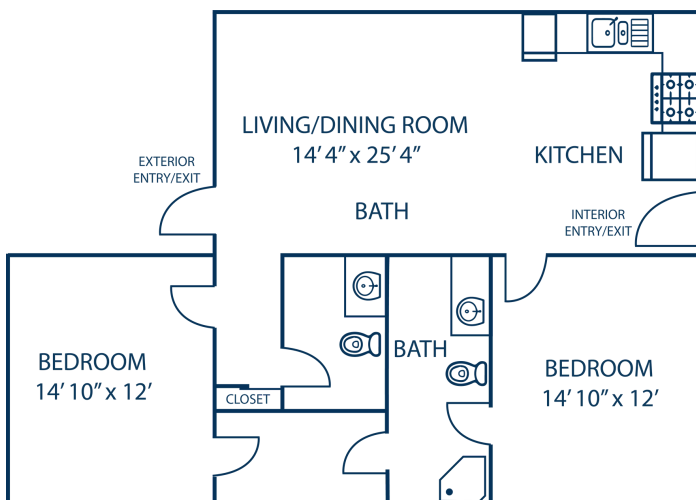
Two Bedroom/One Bath (1070 Square Feet)

Rent/Utilities: _____



Two Bedroom/One Half Bath (1070 Square Feet)

Rent/Utilities: _____



Two Bedroom/Two Bath (1090 Square Feet)

Rent/Utilities: _____

