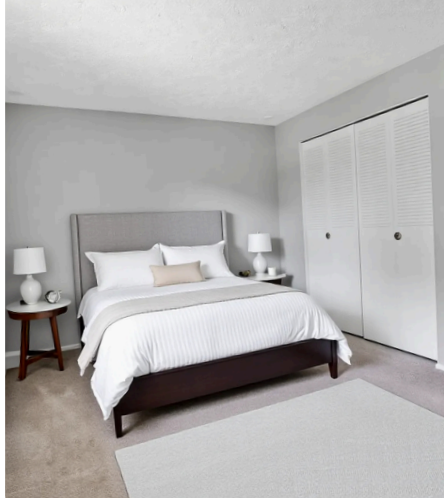
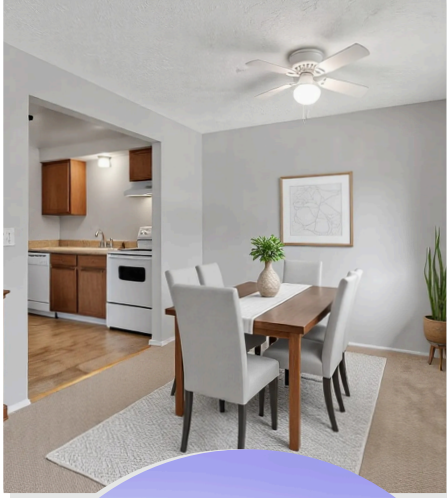


# PINE VALLEY APARTMENTS



APPLY TODAY!

## "Where We Are All Family"

1345 Maiden Lane

Greece, NY 14626

**(585) 531-6810**

Email: [pinevalley@npmainfo.com](mailto:pinevalley@npmainfo.com)

### AMENITIES

24-Hour Emergency Maintenance  
Service

Additional Storage

Cable Ready

Ceiling Fans

Coin Operated Laundry

Dead Bolt Locks

Exterior Lighting

Garbage Paid

Indoor Mailboxes

Intercom System

Large Double Windows

Minutes From Expressway

Manicured Grounds

Snow Removal

Spacious Closets

Spacious Kitchens

Vertical Blinds

Wall To Wall Carpet

Welcome to Pine Valley Apartments, a serene apartment complex offering a comfortable living experience away from city noise. Conveniently located on a bus line, residents have easy access to shopping and expressways.

Our dedicated management team prioritizes your needs, ensuring prompt service and support. Experience the joy of living in a beautiful, tranquil community by choosing Pine Valley Apartments as your new home.



"Relax, You're Home Now"

# FLOOR PLANS

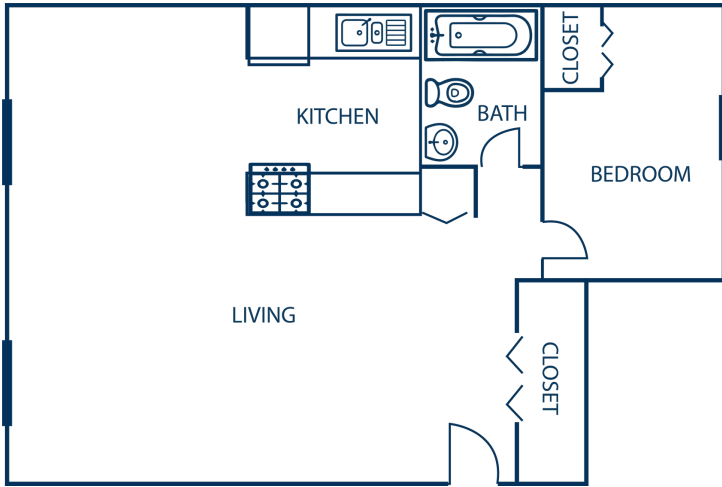
Deposit: \_\_\_\_\_

Application/Admin Fee: \_\_\_\_\_

Pet Fee/Rent: \_\_\_\_\_

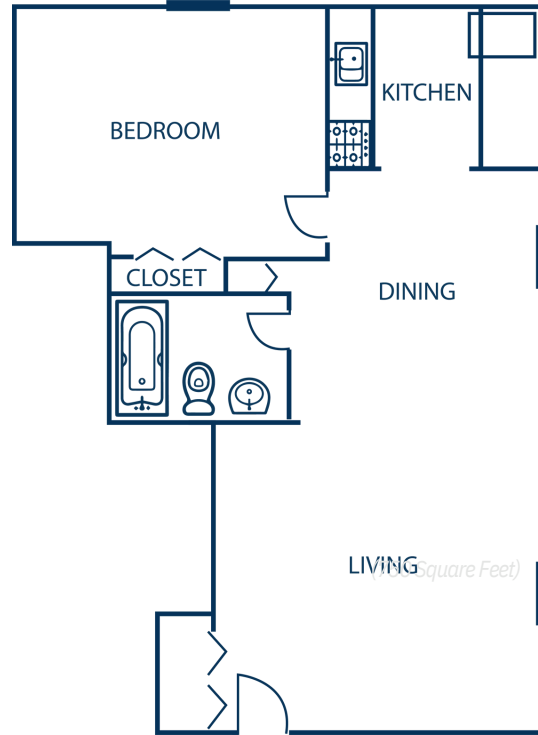
## One Bedroom/ One Bathroom (750 Square Feet)

Rent/Utilities: \_\_\_\_\_



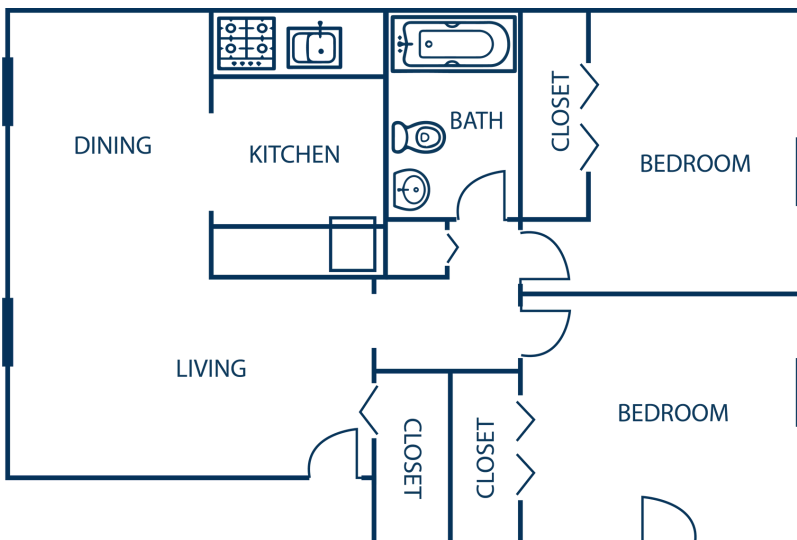
## One Bedroom/ One Bathroom

Rent/Utilities: \_\_\_\_\_



## Two Bedroom/ One Bathroom (850 Square Feet)

Rent/Utilities: \_\_\_\_\_



Visit [www.npmainc.com](http://www.npmainc.com)  
for more information!