



APPLY TODAY!

Our community has everything you could want in apartment living: beauty, variety, activities, and wide-open spaces. Our on-site staff enjoys social events as well as the privilege of chatting with our friendly residents around the sparkling pool.

One look will convince you that it's the closest thing to living in your own home – in a warm and established neighborhood – without the responsibilities. The world is simply full of reasons for moving to Heather Glen Townhomes.

Call For Daily Specials! Heather Glen Townhomes has all the advantages of modern living.

Built as condominiums, this extraordinary community is situated in beautiful southeast Arlington, just minutes to I-20, I-30, Six Flags, and the Parks Mall.



"Relax, You're Home Now"

"Supreme Townhomes for a Comfortable Lifestyle"

2225 Ridge Run Road, Arlington, TX 76014

(817) 467-1151

Email: heatherglentownhomes@npmainfo.com

AMENITIES

- All-Electric Kitchens
- Cable TV Connections
- Swimming Pool With Sun Deck
- Exterior Lighting
- Abundant Ceiling & Exterior Wall Insulation
- Garbage Disposal
- Mini Blinds Throughout
- Private Patios/Balconies
- Professionally Decorated Floor Plans
- Professional Landscape & Maintenance
- Roomy Living Areas
- Separate Dining Areas
- Spacious Walk-In Closets
- Stainless Steel Double Sinks
- Tile-Hearth Fireplaces
- Tiled Entry Ways
- Washer & Dryer Connections

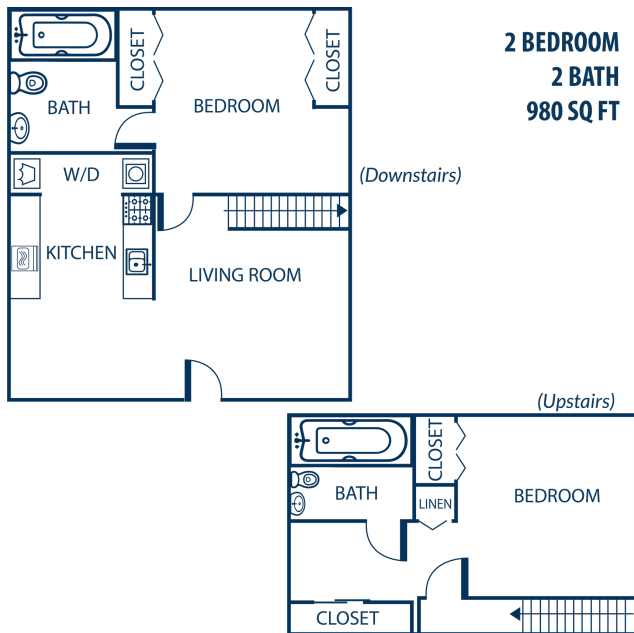
FLOOR PLANS

Deposit: _____

Application/Admin Fee: _____

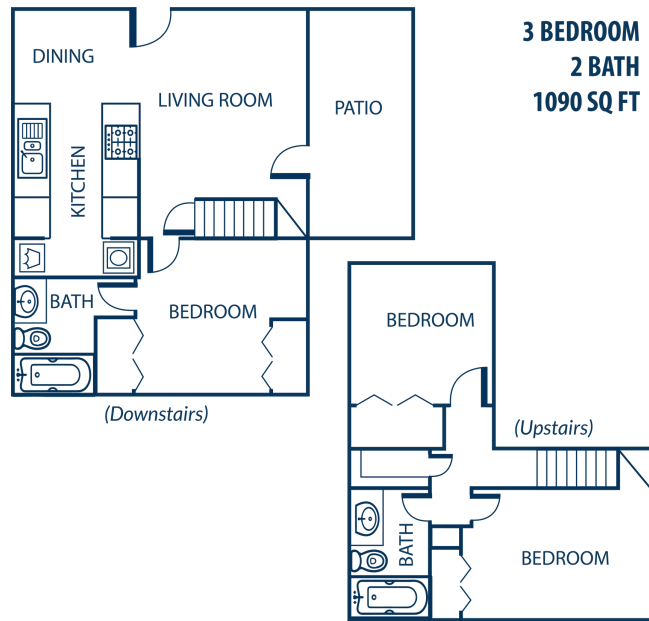
Pet Fee/Rent: _____

Two Bedroom/Two Bath (980 Square Feet)



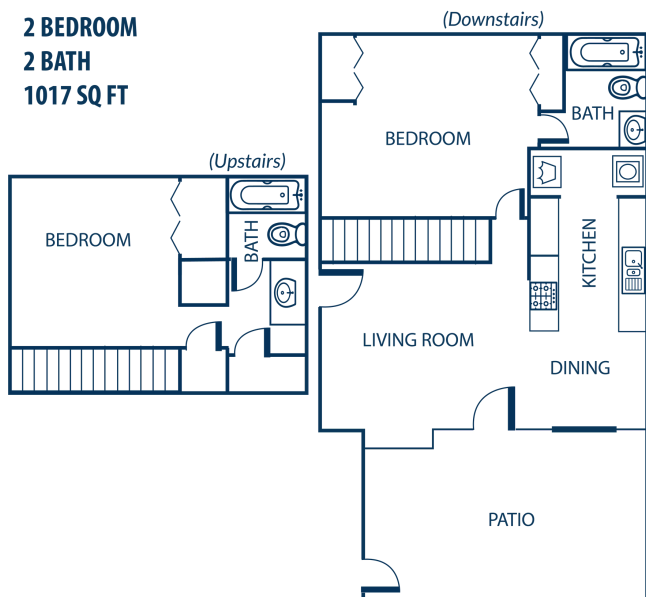
Rent/Utilities: _____

Three Bedroom/Two Bath (1090 Square Feet)



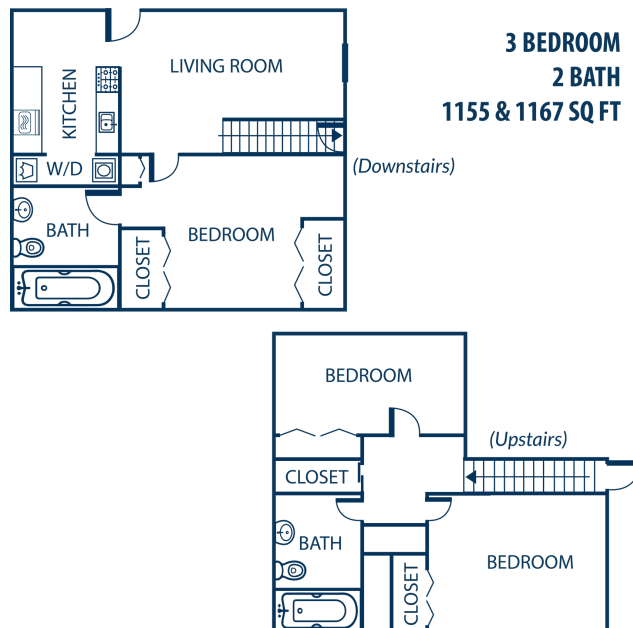
Rent/Utilities: _____

Two Bedroom/Two Bath (1017 Square Feet)



Rent/Utilities: _____

Three Bedroom/Two Bath (1155 & 1167 Square Feet)



Rent/Utilities: _____