

EASTLAKE VILLAGE



APPLY TODAY!

Eastlake Village is a charming residential community with convenient access to major highways (I-240, I-35, I-44) for easy commutes to South Oklahoma City and Moore. Situated in the Moore Public School District, we offer upgraded 1 and 2-bedroom apartments featuring black appliances, faux marble countertops, new fixtures, and flooring. Each unit includes a stackable washer and dryer, a wood-burning fireplace, and a patio or balcony with storage. A storage facility is available at a discounted rate for residents. Relax, you're home now!



"Relax, You're Home Now"

"The Perfect Place For Your Next Chapter"

12901 South Western Ave

Oklahoma City, OK 73170

(405) 342-4550

Email: eastlake@npmainfo.com

AMENITIES

- 24 Hour Emergency Maintenance Service
- Sparkling Pool with Lounge Deck
- Additional Storage Area
- Cable Ready
- Central Mailbox Area
- Clubhouse
- Courtesy Officer
- Cox Quick Connect Property
- Dead Bolt Locks
- Exterior Lighting
- Fireplace
- Garbage Disposal
- 2" Blinds
- Moore School District
- Monthly Resident Functions
- Online Resident Portal
- Outside Storage
- Pavilion With Picnic Area/Grills
- Storage Units
- Text Friendly
- Vaulted Ceilings
- In Unit Washer & Dryer



FLOOR PLANS

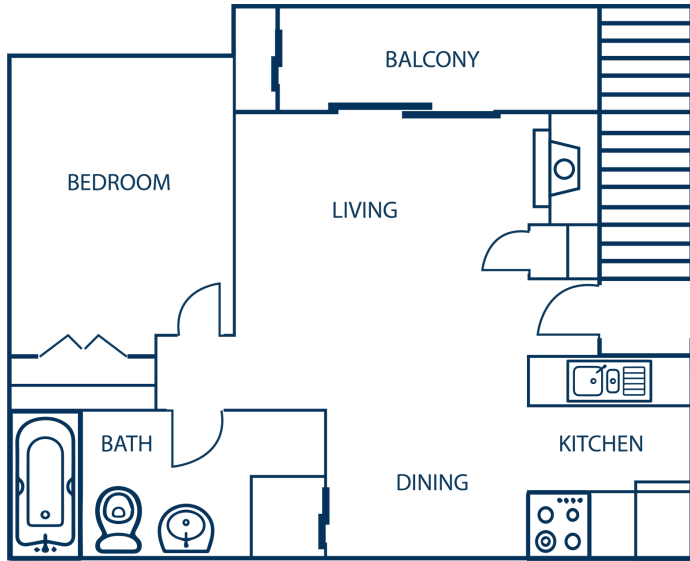
Deposit: _____

Application/Admin Fee: _____

Pet Fee/Rent: _____

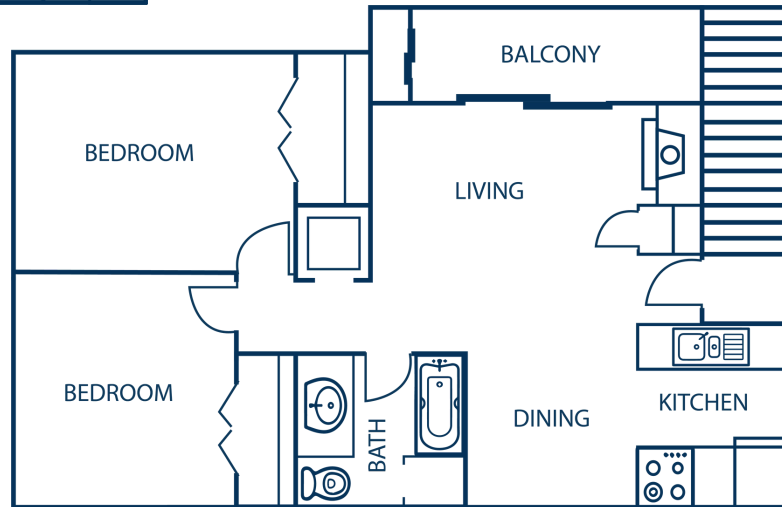
One Bedroom/One Bath (600 Square Feet)

Rent/Utilities: _____



Two Bedroom/One Bath (710 Square Feet)

Rent/Utilities: _____



Two Bedroom/One Bath (750 Square Feet)

Rent/Utilities: _____

