

Pool



Tennis Court



AMENITIES

- 24 Hour Emergency Maintenance Service
- BBQ Area
- Cable Hook-Up
- Dog Park
- Garbage Disposal
- Kitchen Bar & Pantry
- Mini Vertical Blinds
- Minutes From Expressway
(Easy Access To I-4 and 17-92 & 417)
- On-Site Courtesy Officer
- Picnic & Recreation Area
- Playground
- Public Transportation
- Scenic Atmosphere
- Screened Patios & Balconies
- Large Swimming Pool
- Tennis Court
- Washer/Dryer Hookups

"Expect To Be Impressed"

DALTON PLACE APARTMENTS

Call or text

(407)321-0584

12411 Groveview Way
Sanford, FL 32773

Email: daltonplace@npmainfo.com



National Property Management
Associates Inc. & Affiliated Companies

EST. 1965

"Relax, You're Home Now"

www.npmainc.com



Bathroom



Kitchen



"Expect To Be Impressed"

Living Room



Bedroom

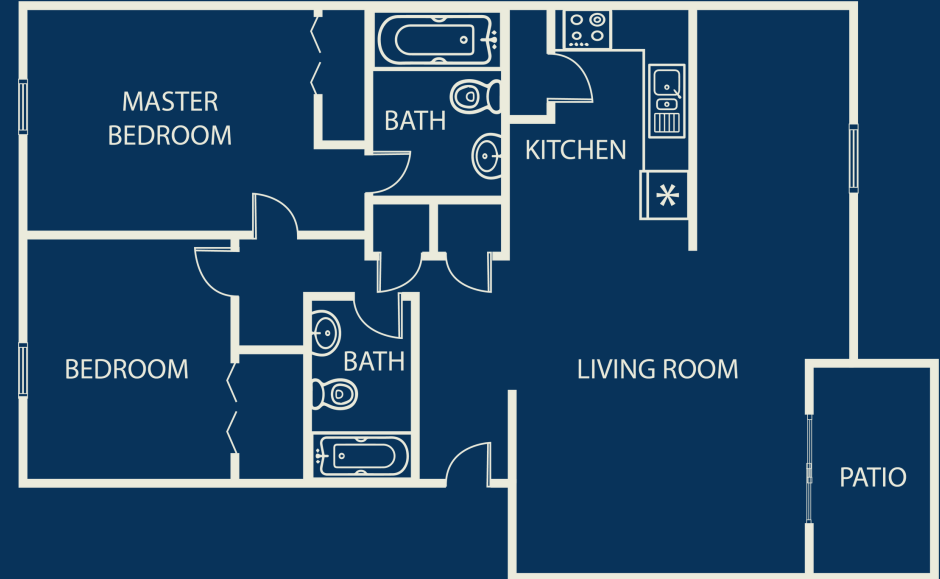


Apply Today!



FLOOR PLANS

Two Bed Two Bath
1035 SQ FT



Dalton Place is nestled in a peaceful, wooded setting surrounded by a residential neighborhood. Conveniently located on Lake Mary Boulevard, we are minutes away from beautiful Lake Monroe, shopping, restaurants, banking, and more! Offering the best rated Lake Mary Florida School District! Come see why we are your best choice in apartment living!

NPMA is a family owned and operated organization for over 50 years that owns and manages quality apartment communities. Each property is managed by dedicated professionals committed to the needs of our residents while maintaining the long-term viability of each property.

Rent: _____
Additional Charges: _____
Deposit: _____
Application Fee: _____



Contact Us Today For More Information!