



Representing over 50 years  
of excellence, serving residential  
communities nationwide.

At **AVALON** *Apartments*  
**RELAX... YOU'RE HOME NOW!**

Efficient Heat Pumps

Intrusion Alarm System

Patio / Balcony

Bike to Campus

Superb Maintenance

Pristine Pool

Huge Walk-In Closets

Pantry

Washer & Dryer Included

Small Pets

Large Windows

Easy Access to Highway 9 & I-35



2920 S. Chautauqua

Norman, OK 73072

405-579-0158

[avalon@npmainfo.com](mailto:avalon@npmainfo.com)

[www.npmahome.com](http://www.npmahome.com)



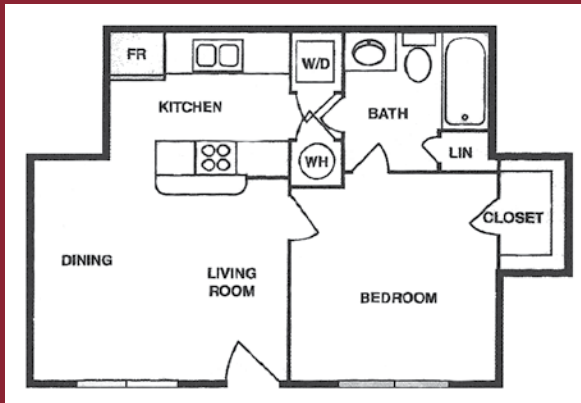
LIVE  
Abundantly



LIVE  
Indulgently

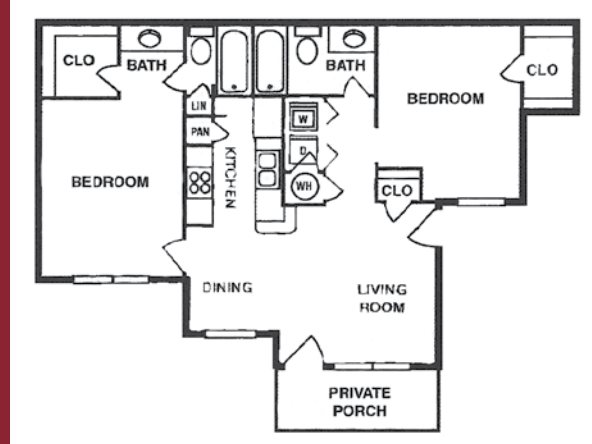


LIVE  
Carefree



**(A) 1 Bedroom • 500 Square Feet**

Rent \$ \_\_\_\_\_  
 Deposit \$ \_\_\_\_\_  
 Application \$ \_\_\_\_\_



**(B) 2 Bedroom • 900 Square Feet**

Rent \$ \_\_\_\_\_  
 Deposit \$ \_\_\_\_\_  
 Application \$ \_\_\_\_\_